

AP MORGAN



Kingswood Road, Northfield
Offers in the region of £185,000

Features:

- Three double bedrooms
- Generous lounge
- Large kitchen/diner
- Utility room with cold store
- Spacious grass laid garden
- Off street parking

Description:

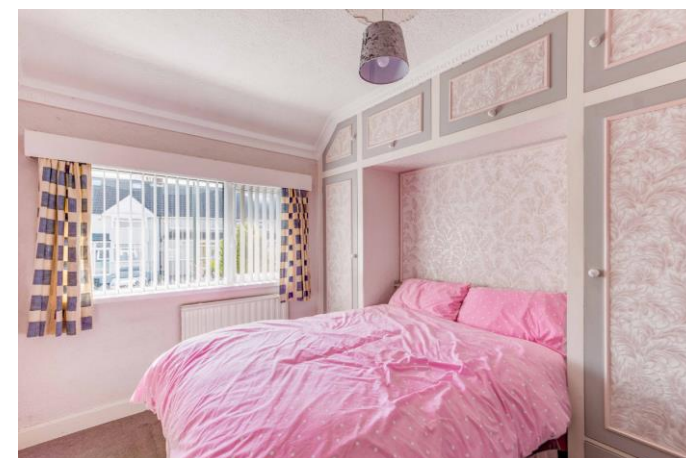
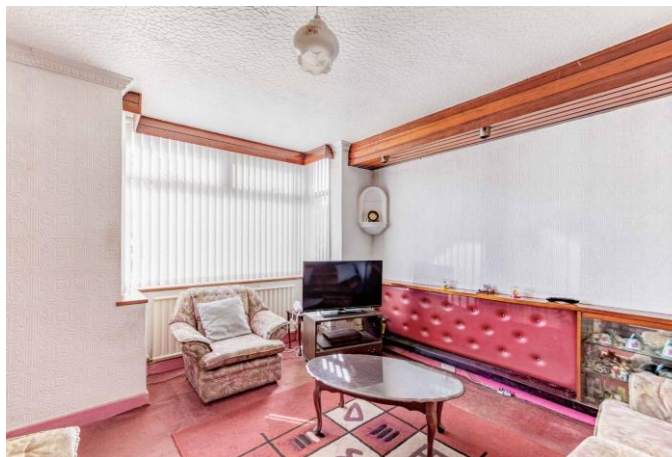
This three-bedroom, mid-terraced house presents a generous lounge, kitchen/diner, three double bedrooms, a bathroom, large grass-laid garden off street parking.

Approaching the property, there is a gated, paved drive allowing for off-street parking.

The ground floor presents: a hall which gives immediate access to the generous lounge, giving plenty of space for multiple suites, and presents a room-length shelf and bay window. The kitchen /diner is accessed from the living room and offers counter space and a breakfast bar, featuring an integral sink, space/plumbing for freestanding appliances with the diner giving room for a dining table and chairs; complete with fireplace and giving access to the utility room, this also has counterspace with panoramic views of the rear garden and access to a storage cupboard.

Ascending the first floor, the landing presents Bedroom One, a spacious double with integral storage. Bedroom Two is similarly a double, also with integral storage, looking to the rear aspect, and Bedroom Three is a third double with a cupboard which also has a room length counter. The bathroom presents a bath/ shower, washbasin, and WC.

The large rear garden opens to a paved patio area giving space for outdoor furniture, continuing to a grass-laid lawn bordered by a single paved path and wooden panel fencing, this is a versatile space.



Situated in Northfield, a short drive to local amenities, this property is close to schools and supermarkets, shops, restaurants, and bars. Local public transport links are also nearby as well as the M42, allowing access to major road networks.

Details:

Hall

Lounge 10'8" x 10'8" (3.25m x 3.25m) Both Max

Kitchen/Diner 10'5" x 15'6" (3.18m x 4.72m) Both Max

Utility Room 8'4" x 6'9" (2.54m x 2.06m) Both Max

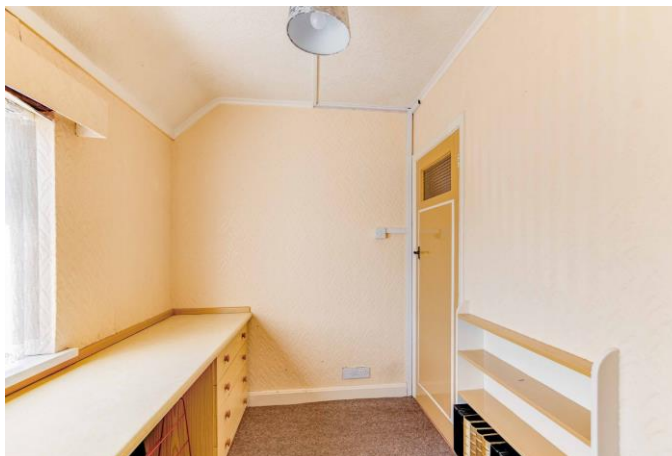
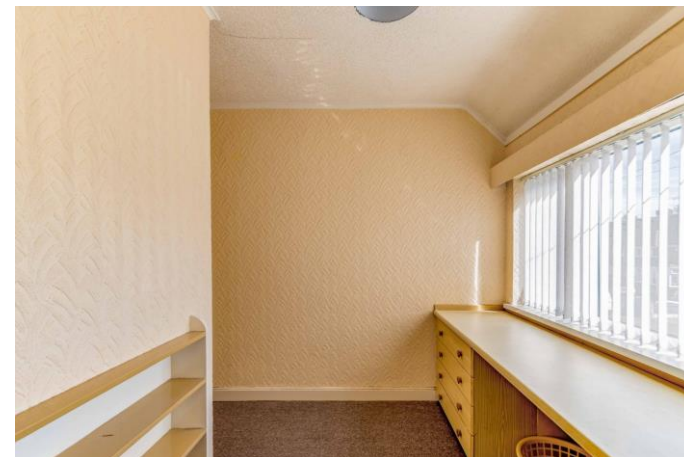
Landing

Bedroom One 10'3" x 8'9" (3.12m x 2.67m) Both Max

Bedroom Two 10' x 9' (3.05m x 2.74m) Both Max

Bedroom Three 6'5" x 9'6" (1.96m x 2.9m) Both Max

Bathroom 6'2" x 5'9" (1.88m x 1.75m) Both Max



EPC Rating: To be confirmed

Council Tax Band: B (tbc by solicitors).

Tenure: Freehold (tbc by solicitors).

For more information or to arrange a viewing, please call us on 0121 827 6827.

How can we help you?

Need a mortgage?

We recommend Wiser Mortgage Advice. They will search the market for you to ensure you get the right lender and mortgage deal. They typically achieve mortgage offers much more quickly than if you were dealing with lenders directly. The initial appointment is free and without obligation. Call us on 0121 827 6827, or visit their website for more information: www.wisermortgageadvice.co.uk

Property to sell?

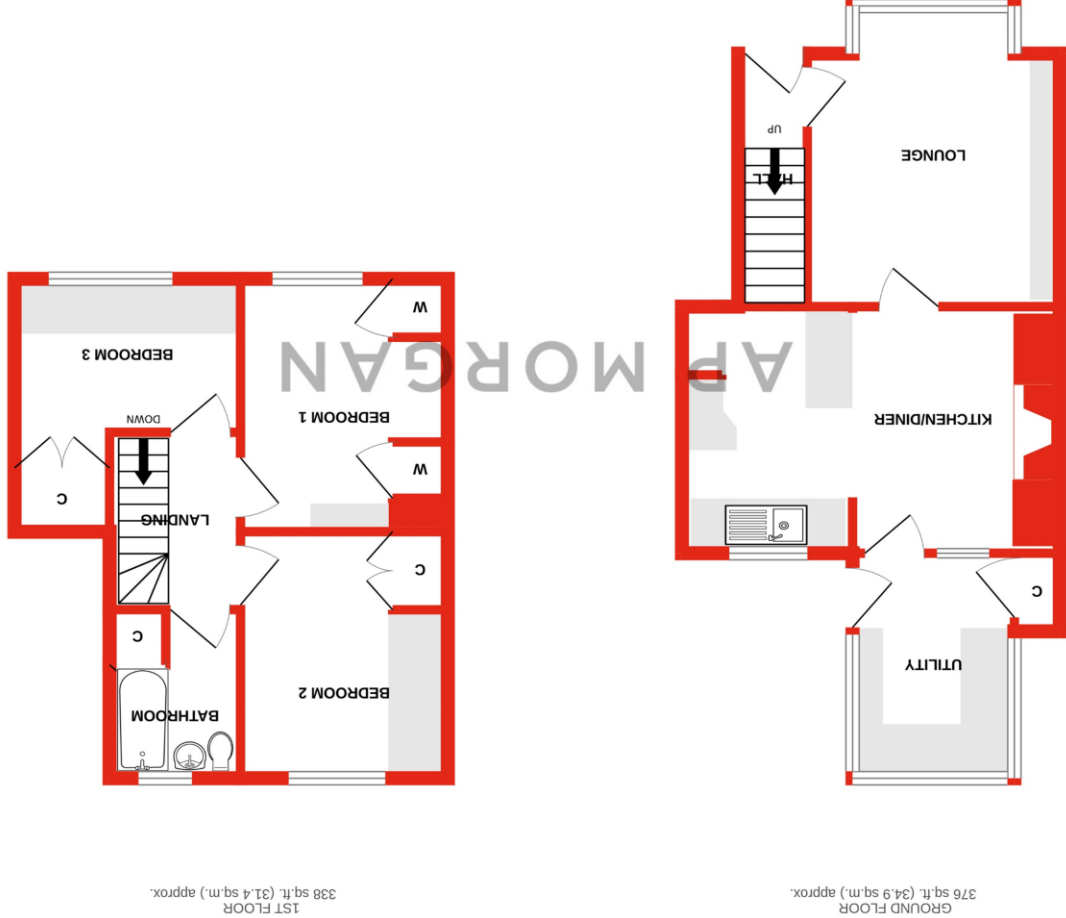
If you need to sell a property in order to buy, you ideally need to be on the market at least (and preferably Sold STC) before viewing, otherwise you may lose out to other buyers when the right property comes along. In these circumstances we can get your property 'live' quickly. Just book a free valuation and we will visit your property and discuss your needs.

Need a solicitor?

A good solicitor can save you literally weeks of time in the buying/selling process, reducing the stress levels of all involved. We will instruct a reputable firm that is competitive on cost and very reliable. Just ask for a quote.

Need a removal company and storage?

A professional removal company takes the stress out of moving. Knowing that your belongings are safe and insured far outweighs any small savings by trying to do it yourself or using a man-and-a-van service. We work closely with and recommend Cube Removals as the leading local firm. For peace of mind and a reliable service call them on 0800 193 0000 or visit their website, cuberemovals.co.uk, to arrange a survey.



While every attempt has been made to ensure the accuracy of the layout contained here, measurements of doors, windows, rooms and any other items are approximate and no responsibility is taken for any error, omission or mis-statement. This plan is for illustrative purposes only and should be used as such by any prospective purchaser. The services, systems and appliances shown have not been tested and no guarantee as to their operability or efficiency can be given.
Made with Metropix ©2025

No statement in these details is to be relied upon as representation of fact, and purchasers should satisfy themselves by inspection or otherwise as to the accuracy of the statements contained within. These details do not constitute any part of any offer or contract. AP Morgan and their employees and agents do not have any warranty or representation whatsoever in respect of this property. These details and all statements herein are provided without any responsibility on the part of AP Morgan or the vendors. Equipment: AP Morgan has not tested the equipment or central heating system mentioned in these particulars and the purchasers are advised to satisfy themselves as to the working order and condition. Measurements: Great care is taken when measuring, but measurements should not be relied upon for ordering carpets, equipment, etc. The Laws of Copyright protect this material. AP Morgan is the Owner of the copyright. This property sheet forms part of our database and is protected by the database right and copyright laws. No unauthorised copying or distribution without permission.